

**Indiana University  
School of Medicine**

**WHAT YOU NEED TO KNOW  
(and other stuff too)**

**Vince Sheehan  
Chief Information Officer and  
Associate Dean for Information Technology**

# WHO WE ARE

- **Indiana University is the only medical school in the state**
- **1903 - Established in Bloomington, Indiana**



**School of Medicine Building  
1906  
Senate Ave. - Indianapolis**

## WHO WE ARE

- **Second largest medical school student population in the country**



**IUSM Ruth Lilly Medical Library**

- **More than half of Indiana's physicians educated at IUSM**

# **THE NUMBERS**

## **MEDICAL STUDENTS**

- **1,156 Medical students (M.D. candidates)**

**Includes 44 M.D./Ph.D. candidates**

- **2,203 applicants for 280 positions annually**
  - **86% of med students from Indiana**
- **335 Master's and Ph.D. candidates – primary focus on research**

# **THE NUMBERS**

## **FACULTY**

- **1,251 Full-Time Faculty**
- **1,916 Volunteer Faculty**

## **RESIDENTS**

- **1,055 Residents and Fellows**
- **76 Accredited residency programs**

**STAFF - 2,312**

**15,465 Living ALUMNI**

# **THE NUMBERS**

**Total IUSM Budget = \$ 776,474,285**

**Total IU Budget = \$2.165 Billion**

**IUSM = 36% of university budget**

**\$200 million in research dollars**

**More than 50% of IU research dollars flow through the IUSM**

# WHERE ARE OUR MED STUDENTS?

**Eight additional IU Centers for Medical Education locations around the state**

- Half of first and second year students are educated at:
  - **IU BLOOMINGTON**
  - **IU NORTHWEST (GARY)**
  - **INDIANA-PURDUE FORT WAYNE (IPFW)**
  - **BALL STATE (MUNCIE)**
  - **INDIANA STATE (TERRE HAUTE)**
  - **NOTRE DAME (SOUTH BEND)**
  - **PURDUE (WEST LAFAYETTE)**
  - **UNIVERSITY of SOUTHERN INDIANA (EVANSVILLE)**
- All Third and Fourth year Med Students at IUPUI



**IUSM – Muncie**



**IUSM – Gary**



**IUSM – South Bend**

# I BORROWED THE I-LIGHT SLIDE



# **WHY IS ACADEMIC MEDICINE DIFFERENT?**

## **19 CLINICAL AND 6 BASIC SCIENCE DEPARTMENTS**

- **All department chairs report to the dean**
- **Each department has significant autonomy**
  - **Many with their own I.S. shops**

**<http://medicine.iu.edu/departments.html>**

# **WHY IS ACADEMIC MEDICINE DIFFERENT?**

## **30+ PRACTICE PLANS**

### **IU MEDICAL GROUP SPECIALTY CARE (IUMG-SC)**

- Each a separate legal entity (Radiology, Cardiology, etc.)
- Each generates own revenue

### **IU MEDICAL GROUP PRIMARY CARE (IUMG-PC)**

- ~200 physicians
- Jointly owned with Health and Hospital Corporation
- Each has its own I.S. Shop

<http://www.iumg.com>

# **WHY IS ACADEMIC MEDICINE DIFFERENT?**

**Research is a big part of what we do**

**Maintenance of centuries-old technologies**

**(Animal Lab circa 1959)**



# **WHY IS ACADEMIC MEDICINE DIFFERENT?**

**Develop support for new technologies**

**(Dr. Edenberg loads DNA samples to be genotyped - 2004)**



# **WHY IS ACADEMIC MEDICINE DIFFERENT?**

**We teach and practice in places we don't own**

- **Clarian Health (Methodist, University, Riley) - 47%**
- **Richard Roudebush VA Hospital - 60%**
- **Wishard Hospital - 100%**

**Extreme Mobility**

- **M.D. at University Hospital in the morning and at V.A. in the afternoon**
- **Cardiologist at Methodist needs an echocardiogram from an IU server at Wishard**

# **WHY IS ACADEMIC MEDICINE DIFFERENT?**

## ***Academic Freedom 'vs' Security***

**Delicate Balance to support Academic pursuits in a secure environment**

**We don't mass block websites**

**We attempt to permit free access across the spectrum**

## **THE BIG ISSUES – 2001**

- 1. No unified Information Technology approach**
- 2. Duplication of services across some departments**
- 3. Other departments have inadequate, or no, support**
- 4. Disconnect with university I.T. services**
- 5. No coordination point for Partners**
- 6. Lack of communications about I.T. within IUSM**

**What to do, what to do?**

# MAKE A PLAN



Indiana University School of Medicine  
**Information Technology  
Strategic Plan**

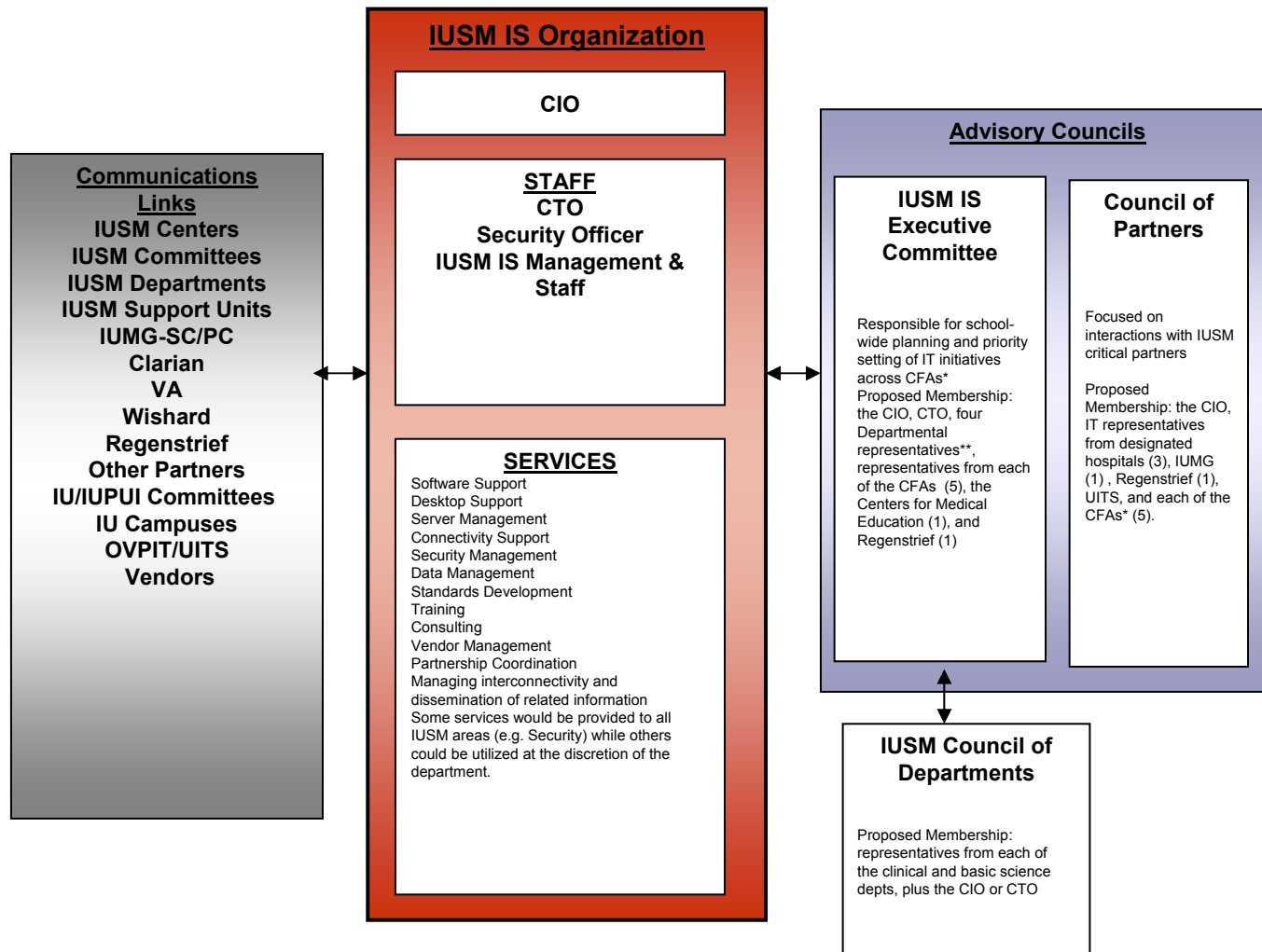
October, 2002

<http://technology.iusm.iu.edu/strategicplan/strategicplan.aspx>

# **IUSM TECHNOLOGY ORGANIZATION**

- **CREATED SCHOOL-WIDE INFORMATION SERVICES ORGANIZATION  
HEADED BY CHIEF INFORMATION OFFICER**
- **RESPONSIBLE FOR COORDINATING TECHNOLOGY ACTIVITIES  
FOR THE SCHOOL**
- **CHARGED WITH BEING THE CONDUIT FOR TECHNOLOGY ACTIVITIES  
WITH OUR PARTNERS**
- **DUAL APPOINTMENT TO IUSM DEAN AND IU CIO  
FACILITATES LEVERAGING OF UNIVERSITY RESOURCES**

# IUSM TECHNOLOGY ORGANIZATION



# **IS IT WORKING?**

**2 ½ years into the plan**

- **Organizational structure in place and fully operational**
  
- **Governance structure in place and meeting regularly**
  
- **54 Initiatives were identified in the plan**
  
- **20 Initiatives have been completed**
  
- **18 Initiatives are in process**
  
- **16 Initiatives are pending**

# **IS IT WORKING?**

**All services are operational**

**Excellent cooperation from departments  
(though still independent)**

**17 units have signed up for ISTM service**

**Improved communications**

**Excellent relationship with Partner I.S. organizations**

# **CHALLENGES**

- **Funding concerns – first question in academic medicine is: who will pay for this?**
- **State Budget cuts and diminishing clinical revenues**
- **Communications have improved but still difficult at times**
- **Partner coordination**

# **MAJOR ISSUES IN A FEDERATED MODEL**

- **PHYSICIAN COMMUNICATIONS – ROLE OF IHIE?**
  
- **SEAMLESS NETWORK VIEW FROM ANY LOCATION**
  
- **IDENTITY AND ACCOUNT MANAGEMENT**
  - **EMAIL DIRECTORY SHARE**
  
  - **PATIENT COMMUNICATIONS**
    - **HIPAA MANAGEMENT**
      - Internally – 32 covered entities**
      - Externally – crossing partner boundaries**

# HOW DO WE FEEL?



## HOW DO WE FEEL?



**AHAJOKES.COM**